



Volume 9, Number 3

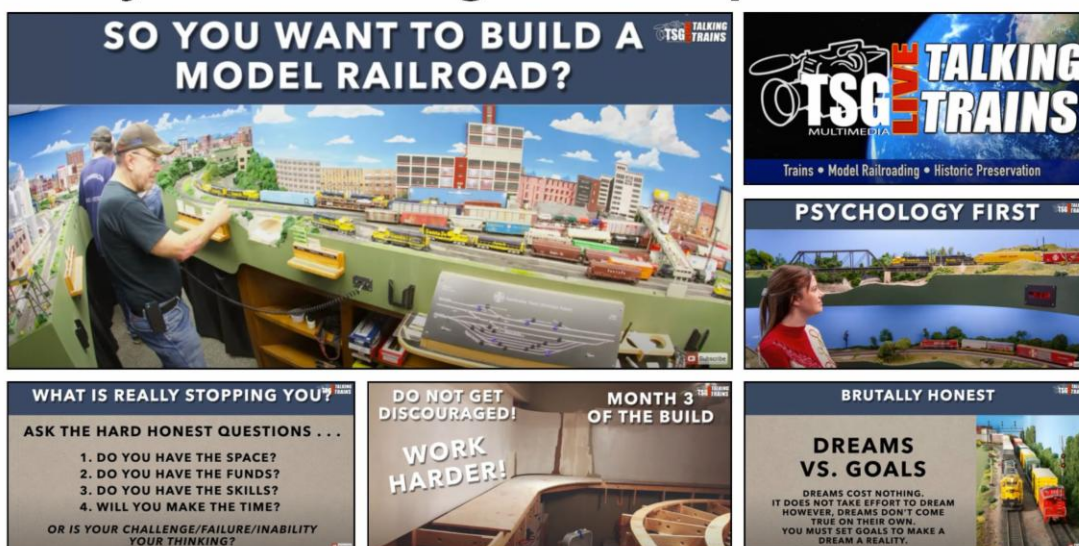
March 2025

The NMRA's *Turntable* is a monthly publication that, like a railroad turntable, will lead you in several directions on the internet.

This e-publication is a collection of railroad and model railroad videos, podcasts, websites, and/or other information freely available on the internet that we think may be of interest to you. The NMRA claims no ownership of this information, nor do we endorse its creators or their websites. The *NMRA Turntable* will not promote individuals or their for-profit ventures.

Having trouble seeing this email? [View as Webpage](#)

TSG Live Talking Trains Presents: Layout Building with Stephen Priest

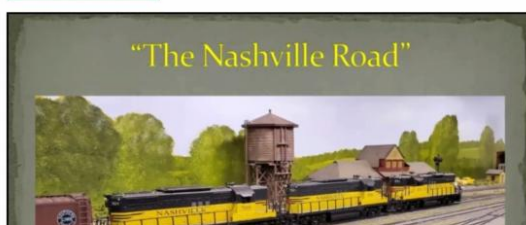


[Layout Building with Stephen Priest](#)

In this episode of Talking Trains, we're joined by Stephen Priest, MMR®, who has built very large model railroad layouts more than once. We'll get the inside scoop on large project management from someone who knows!



OPSIG Virtual Meetup March 10, 2024 Andy Keeney's Nashville Road 1



"The Nashville Road"

Goals

- Incorporate 2 of my favor railroads (B&O and RI) with my own proto-freelance railroad in a busy mid size city environment.
- Modeler's license would be used as needed and there would be no attempt to model the city accurately.



- A major and very important goal was to have both east-west roads (B&O and RI), and a north-south road (freelanced railroad) for increased operations.



Andy Keeney's Nashville Road 1

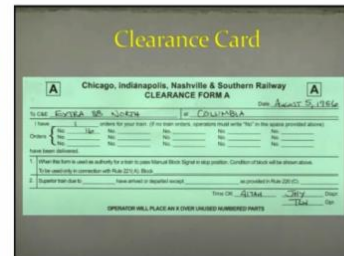
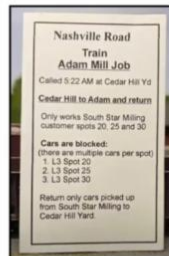
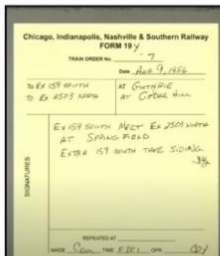
In an OPSIG clinic from last year, Andy Keeney presents the operations of his Nashville Road basement railroad, including extensive photos of the layout itself. Nashville Road 1 primarily shows us his layout and its operating concept.

Nashville Road 2 is a deeper dive into the layout's operational plan and the paperwork created to achieve all of his operating goals. This second video (below) is well worth viewing!

This is also one of the many layouts that will be available to be operated on during the NoVI 2025 NMRA National Convention. More info can be found at [Operating Sessions](#).



OPSIG Virtual Meetup May 19, 2024 Andy Keeney's Nashville Road 2



Andy Keeney's Nashville Road 2

20 HELPFUL Tips and Suggestions

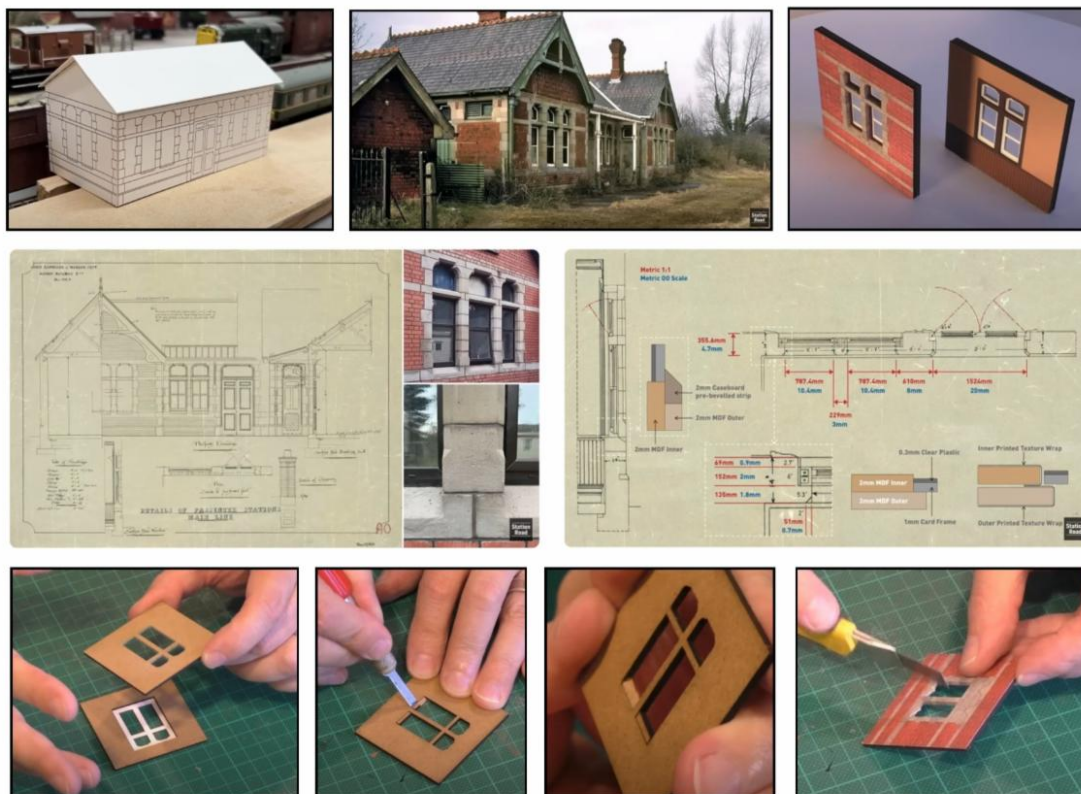
to Build a GREAT Layout for CHEAP



20 HELPFUL Tips & Suggestions

Top 20 tips and suggestions to help you build your layout and ways to save money!

Station Window Design & Experimentation



Station Window Design & Experimentation

Before Julian (Station Road Model Railway) can leap into the platform 2 building, he needed to investigate the design of the windows (in relation to the walls) and work out an appropriate modelling method that would provide a suitable representation to the prototype.

Tichy Train Group Factory Tour



Tichy Train Group Factory Tour

If you're a train or manufacturing nerd, then sit back and enjoy the tour of a model train car and accessory manufacturer in North Carolina.

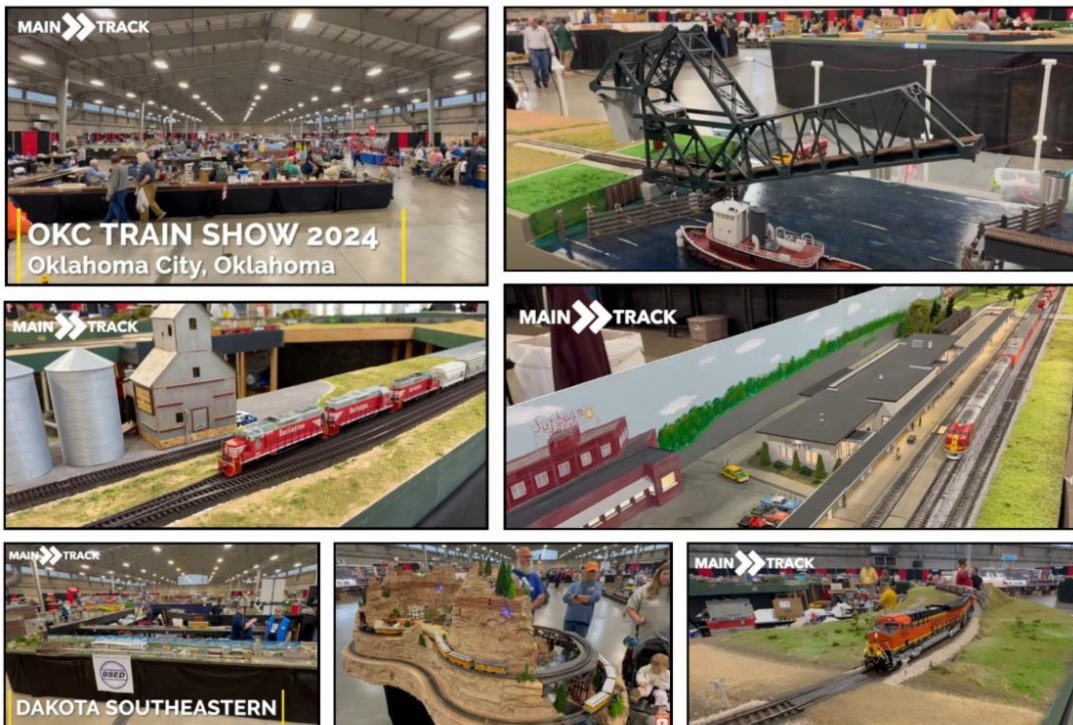
Scott Kremer's *Operations-Oriented* Great Northern Railway Cascade Division



Great Northern Railway Cascade Division

A tour of Scott Kremer's HO scale Great Northern Cascade Division model railroad in 2024. This is also one of the layouts that will be available to be operated on during the NoVI 2025 NMRA National Convention. More info can be found [here](#).

Impressive & Inspiring Layouts OKC Train Show 2024 Tour

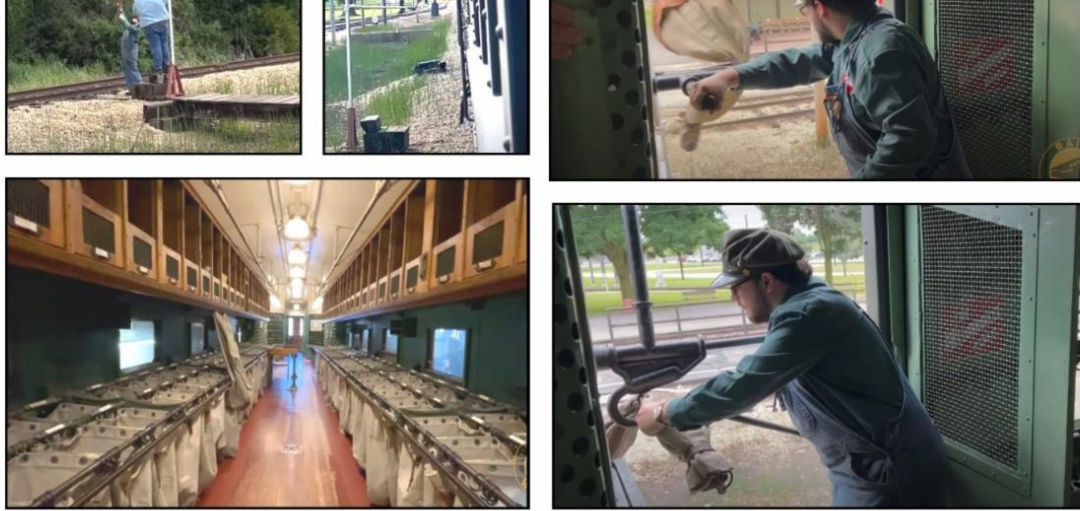


OKC Train Show 2024 Tour

In this video, *Main Track Trains* highlights four HO-scale layouts at the OKC Train Show in Oklahoma City, Oklahoma in November 2024.

The Genius of the Railway Post Office





Catching the Mail at 70mph!

In this video, *Rail Weekly* explores the fascinating history of the Railway Post Office (RPO), a groundbreaking innovation that revolutionized communication in the United States. For the first time, trains enabled lightning-fast mail sorting while on the move, drastically speeding up deliveries across the country. Discover how these specially designed train cars allowed postal workers to sort mail mid-journey, cutting delivery times from days to mere hours. The video dives into the daring feats of precision that made this system so effective, and witness firsthand how RPO workers performed these high-speed tasks under immense pressure.

Official YouTube Channel for the NMRA



The National Model Railroad Association - NMRA

@NMRAonline • 5.27K subscribers • 390 videos

Official YouTube channel for the National Model Railroad Association (NMRA). The ...more

Home Videos Live Playlists Community

Latest Popular Oldest



Richard Frazier What Happens To Your Model Layout and Trains Whe...



Byrne Blumenstein and Scott Kramer NoVI 2025



Dave Ackman Creating 3D Structures Without Learning CAD...



Grouper, covering member dues through health coverage!



Eric Hansmann Backdating Plastic Freight Car Models 20240823...
440 views • 2 months ago



Lee Calkins Modular Layout Design 202409 NMRAX
831 views • 2 months ago



Lloyd Henchey Scenery Pillar 3 Water 202404 NMRAX
122 views • 2 months ago



Eric Hansmann Weathering As Layers 202409 NMRAX
2K views • 2 months ago



James Whatley Update On Photo Interpretation for Model Makers...
230 views • 2 months ago



Lloyd Henchey Scenery Pillar 2 Vegetation 202403 NMRAX
235 views • 3 months ago



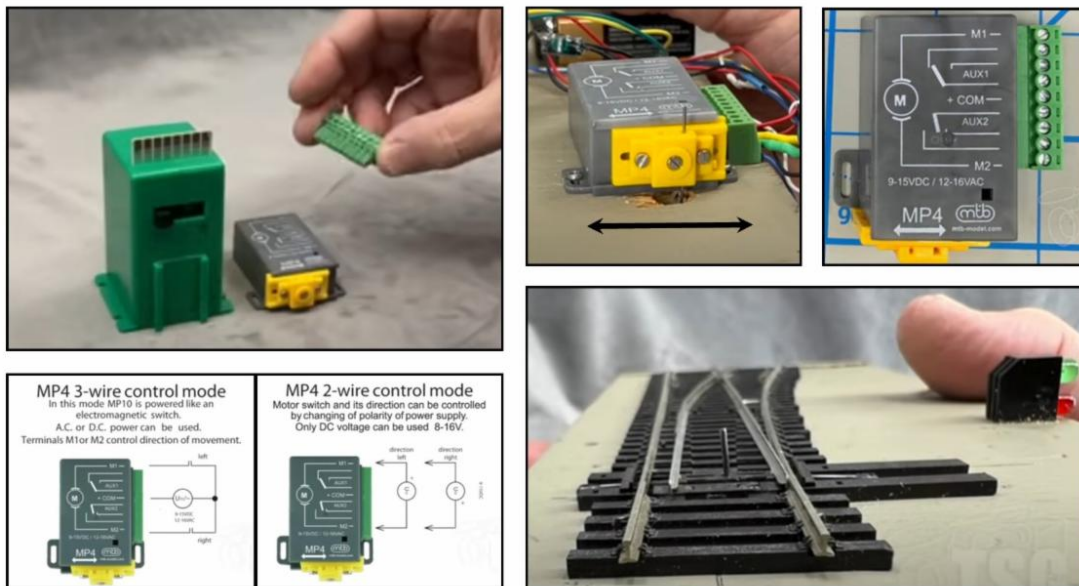
Joseph Giunto The One Town Approach 202403 NMRAX
585 views • 3 months ago



Craig Mackie How to Train Your Crew 202403 NMRAX
280 views • 3 months ago

Official YouTube channel for the National Model Railroading Association (NMRA). The channel contains over 390 videos covering a wide range of subjects including how-to projects, railroad history, prototype and model railway operations, and many more subjects. More videos are being added to the collection all the time, mostly through the NMRx online video presentations that take place every month. Take a look and see what has been added recently!

TSG Multimedia Product Spotlight: MP Series Switch Motors

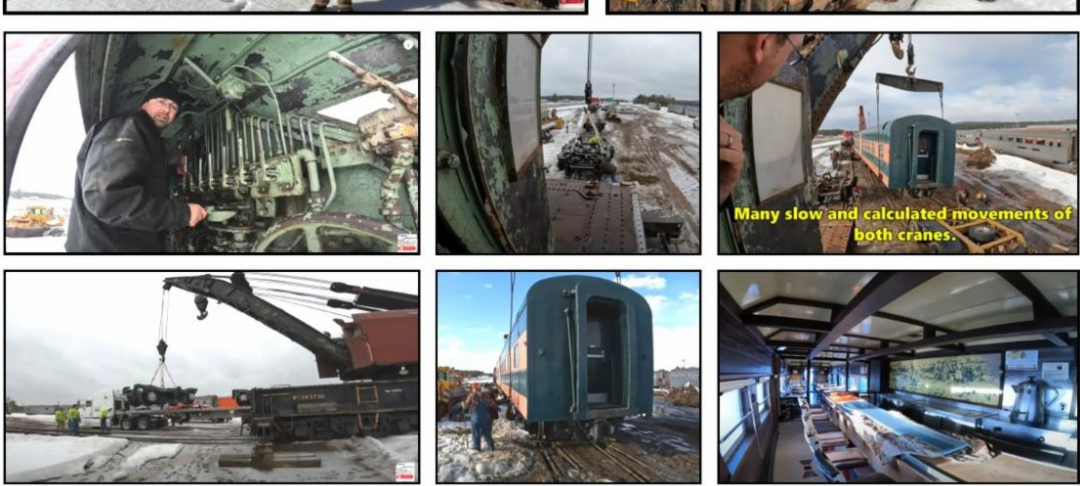


MP Series Switch Motors

The MP series of switch motors for your model railroad present an interesting alternative to the traditional "Tortoise" switch machines that are pretty bulky and often create problems in tight spaces because of the sheer size of their construction.

Railroad Wrecking Crane - DMIR X7 Inside Tour & Lifting a Great Northern Ranch Car





Railroad Wrecking Crane - DMIR X7

The DMIR X7 is a rare survivor of the cutting torch. Having been in active wreck service on the Missabe until 2001, it was then sold to the Wisconsin Great Northern Railroad in Trego, WI.

Watch as Josh Topper of Topper Machine LLC, expertly operates this amazing crane. An interesting example of engineering from the past, the X7 plays vital roles on the WGN.

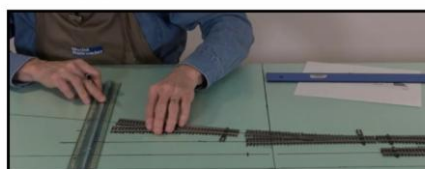
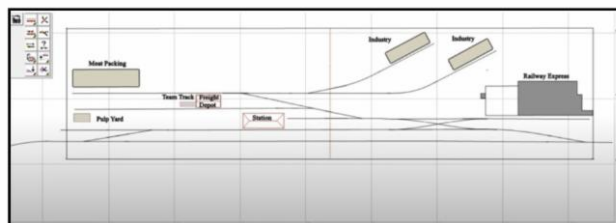
Springfield Train Show 2025



Springfield Train Show 2025

Bob (*Modeler's Workbench*) shows us some of layouts and manufacturers that were at the Amherst Model Train Show in January 2025 in Springfield MA.

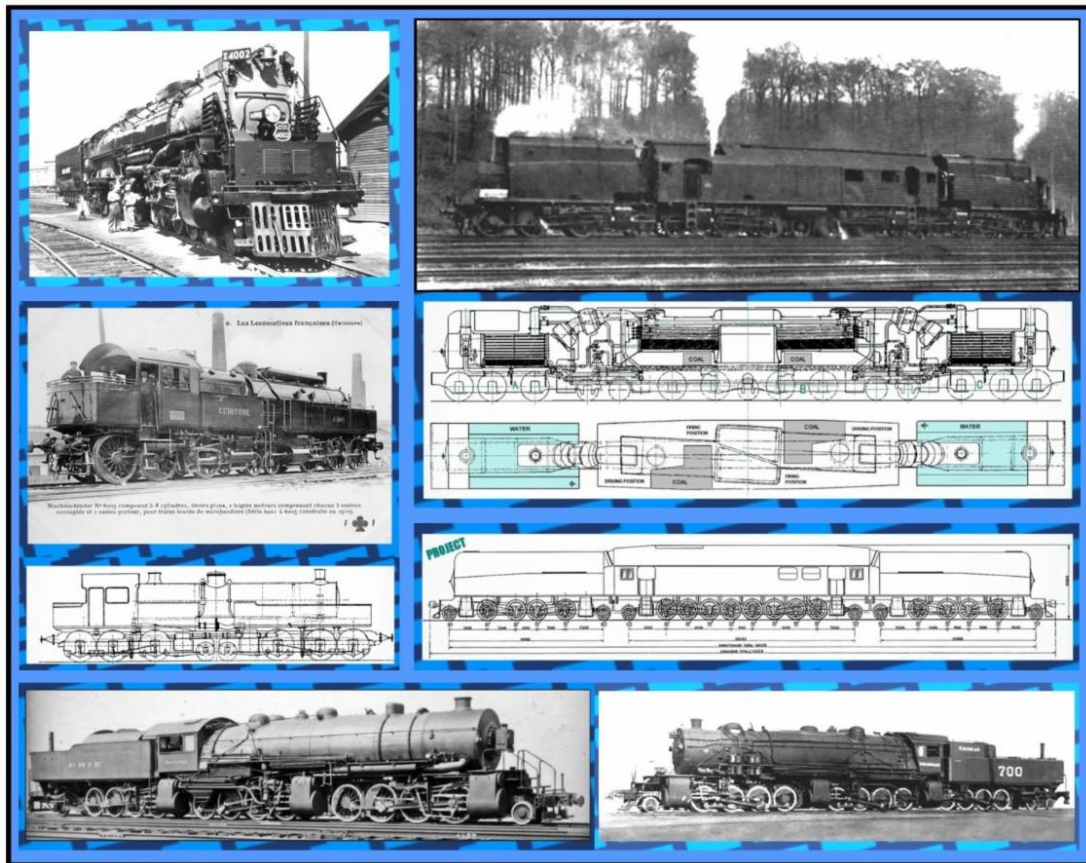
Building a Model Railroad Laying Foam & Transferring the Track Plan



Building a Model Railroad

Larry Puckett will fill you in on why he used foam insulation boards atop his plywood baseboard and discuss the adhesive he used. Then he'll lay the foam. After that he'll get out the track plan and have a go at transferring it to the foam subroadbed. Although pretty straightforward it can take a few minutes to do it since you have to make some pretty accurate measurements and draw a bunch of lines, which is why this video is a bit longer than usual.

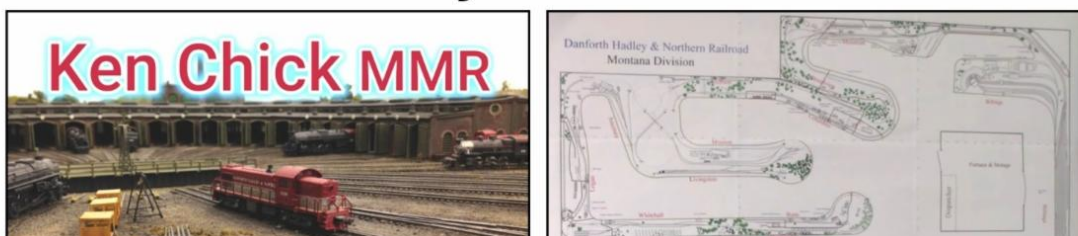
Train of Thought - Enormous Engines

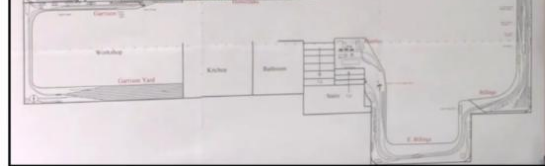


Train of Thought - Enormous Engines

A binge compilation of some of the biggest, strongest and most striking engines to ever run on rails.

Danforth Hadley & Northern Railroad





Danforth Hadley & Northern Railroad

A video by *William A. Mcmillan* on the N Scale model railroad empire of Ken Chick, MMR®. This is a very large layout designed for operations. This is also one of the layouts that will be available to be operated on during the NoVI 2025 NMRA National Convention. More info can be found [here](#).

National Model Railroad Association 2025 National Convention & Train Show

NMRA2025.COM



**national
model
railroad
association**





REGISTER NOW

STATION No. VI



**2025
NMRA**

Novi, MI

CELEBRATING 90 YEARS

2025 NMRA National Convention



Hosted by the Smoky Mountain Division, SER, NMRA

Smoky Mountain Rails

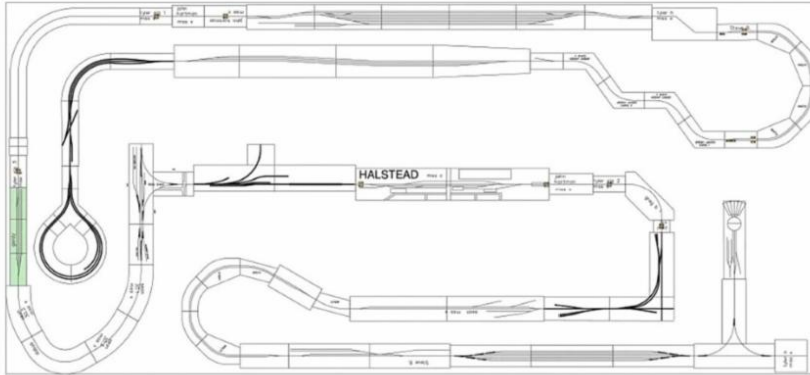


2025 SouthEastern Region Convention

Gatlinburg, TN
September 18-21, 2025

2025 Smoky Mountain Rails

Operations Road Show



Among the many clinics presented at the **Station No. VI** convention will be the **Operations Road Show**. This three-hour clinic will give you hands-on experience of operating a train using Timetable and Train Order rules. The clinic starts with a brief description of the operation methodology and assignment to a two-man crew. That crew will be accompanied by a pilot that helps them navigate their way around the layout by observing the prototypical rules. You will be controlling your train with a radio throttle with local control of turnouts. No previous knowledge of Digitrax throttles is required. No previous experience of operating under Timetable and Train Order rules is required. The only things you need to bring to the clinic are your cell phone and a willingness to learn. Experienced operators are invited too! This year's Free Mo N supplied layout will feature a mainline run of 260 feet (almost 8 scale miles) and many yards and switching opportunities.

The Operations Road Show sessions are available per the following schedule:

- **Tuesday, Wednesday and Thursday**, two sessions each day, starting at **9 AM** and **7 PM**
- **Friday**, two sessions starting at **9 AM** and **2 PM**.

You must register in advance for your session at the layout in Ballroom B. Sign-ups will start on Monday evening at 5 PM. See Cindy Young at the layout in Ballroom B to register for a session.

Operations Road Show at Station No.VI

Pacific Southwest Region's 2025 Convention



PSR 2025 Pacific Southwest Express:
Sept 3-6, 2025

IRVINE HILTON JOHN WAYNE AIRPORT

Copyright All Rights Reserved, The Cajon Division, PSR, NMRA, a 501(c)(3) Corp.

**About
 Conference Hotel**



The Irvine Hilton is located at the John Wayne airport

18800 MacArthur Blvd., Irvine, CA
 92612

PSR 2025 Pacific Southwest Express



90th National Model Railroad Convention

For more information on this convention, or to register for the convention, go to the Station No. VI's website at: <https://nmra2025.com>

NMRA's Partnership Program



PARTNERSHIP PROGRAM

NMRA members can log in and click on the **Benefits** tab to view the **NMRA Partnership Program**. Please patronize all of our partners for some fantastic discounts as an NMRA member!

18Ten Designs
Bespoke Rail
CatzPaw Innovations
CB Train Junction
Clever Models, LLC
Coastmans Scenic Products
Composite Designs, Inc.
CMR Products, LLC
Conowingo Models
Cowcatcher Magazine
Daylight Sales (Merchandise)
Deepwoods Software
Deluxe Materials
Diorama Hobbies
Dwarvin Enterprises, Ltd
East Coast Circuits
Enterprise and National Car Rental Services
Evan Designs
Feight Studios
Fusion Scale Graphics
Gatorfoam
Great Decals!
Green Frog Productions
Highways and Byways Model Railroad Graphics
Hot Wire Foam Factory

ITLA Scale Models
K.I.S.S Method, Inc.
LaBelle Woodworking Co.
LARC Products
Logic Rail Technologies
MAC Rail
Mainline Model Railroad Products, LLC* (Hobby Shop)
Micro-Mark
Mine Mount Models, LLC
Miniprints
Model Railroad Benchwork
Model Railway Backshop
Model Rectifier Corp (MRC)
Model Train Catalogue
Modelers Decals & Paint
Motrak Models
MrTrain.com
Mudd Creek Models
New Creations Victorian Railroad Buildings
Nick and Nora Designs
Northlandz
NScale Works by Mike Holly
Old Depot Gallery
Old West Scenery
R & J Details

R. Duck Woodkits, LLC and R. Duck Locomotive Works
RAM Track
RR-CirKits
Scale Model Plans
Scale Railroad Models
Scenery Solutions
Showcase Miniatures
T-Trak by Denniston
Team Track Models
The N Scale Architech
The Old Depot Gallery
The Train Place* (Hobby Shop)
Tichy Train Group
Touch of the Brush Model Weathering
Train Installations, LLC
Train Show, Inc.
Trainmasters TV/Model Railroad Hobbyist Store
TRAINZ.com
TSG Multimedia
UGEARS
USA Airbrush Supply/
Badger Airbrush
White Rose Hobbies, LLC
WiFi Model Railroad, LLC

Partnership Program Members List



Region & Division News by Jim Zinser, MMR®

Journey's End

The Division Business Car is heading into the station to make its last stop for 2024. But before we disembark, I'd like to thank everyone who's made these bi-monthly journeys possible. First, thank you to all the authors and newsletter editors who've provided the content that makes up this column. Without you, I'd literally have nothing to say!

Next, big thanks to *NMRA Magazine* Editor Cynthia Priest, who makes this and every column and article in every issue look and read so well.

Also, big thanks to proofreaders Bob Hans, Laura Hughes, Steve Marquess, Lloyd Thompson, and Jim Wilson, who make grammatical and spelling errors disappear like magic.

Then there's the "Poster Boy," Chuck Diljak, MMR®. He's the guy who extracts and reformats the articles from the newsletters I feature and posts them on the NMRA.org website for you to read.

Finally, thank you to all of you for reading the column and for taking the time to email me with your comments and suggestions for improving it.

From my family to yours, may 2025 bring peace, happiness, health, and a better world for us all. 🙏

Division Business Car Archives

Previous issues of the **NMRA Turntable** are available on the Turntable Archives page. You must first log in as a member at: nmra.org. After you are in the members-only section, then you must hover over 'Publications' on the menu bar, then 'NMRA Turntable', and then click on one of the list of back issues.

Editor: [Paul Voelker, HLM](#)

Executive Editor: [Rick Coble](#)

The NMRA Turntable is an official monthly production of the National Model Railroad Association, Inc. Publishing Department (Riley Triggs Manager). Its purpose is to introduce NMRA members to a selection of instructional videos and online publications that they may find of interest. If you know of an NMRA member who is not receiving this mailing, please direct them to [here](#) to update their email address. If you no longer wish to receive these mailings, please don't mark them as SPAM. Instead, click the Safe Unsubscribe link at the bottom of this page. ©2021 National Model Railroad Association, Inc., P.O. Box 1328, Soddy Daisy TN 37384.

